

UTAH STYLE

& DESIGN

185+

IDEAS FOR
HOT ROOMS &
COOL GARDENS

CHILL OUT
EASY RECIPES TO
BEAT THE HEAT



SUMMER 2008 \$4.95 U.S.



DISPLAY UNTIL SEPT. 30, 2008

CURB APPEAL - BEFORE & AFTER
PLANNING THE PERFECT SUMMER PARTY
THE LATEST IN OUTDOOR KITCHENS



LEFT: Designer Gregg Hodson replaced a feeble structure in Susan Loveridge's backyard with a large, square pavilion. Chartreuse awning material, trimmed in white, frames the outdoor living space and shades it throughout the summer. Loveridge removes and stores the material during the winter.

RIGHT: Homeowner Susan Loveridge relaxes with designer Gregg Hodson and her two Italian greyhounds, Winston and Bentley.



TRADITION with a twist

Designer Gregg Hodson puts elegance at ease in his client Susan Loveridge's Salt Lake City home

BY BRAD MEE PHOTOGRAPHY BY SCOT ZIMMERMAN

A walkway created from concrete squares leads to the home's shaded front porch. Manicured hedges help establish the home's classic style.



Who says that an old home's past should determine its future, that traditional translates to tired and that tried is always true? Certainly not designer Gregg Hodson of Johnson & Hodson Interior Design in Salt Lake

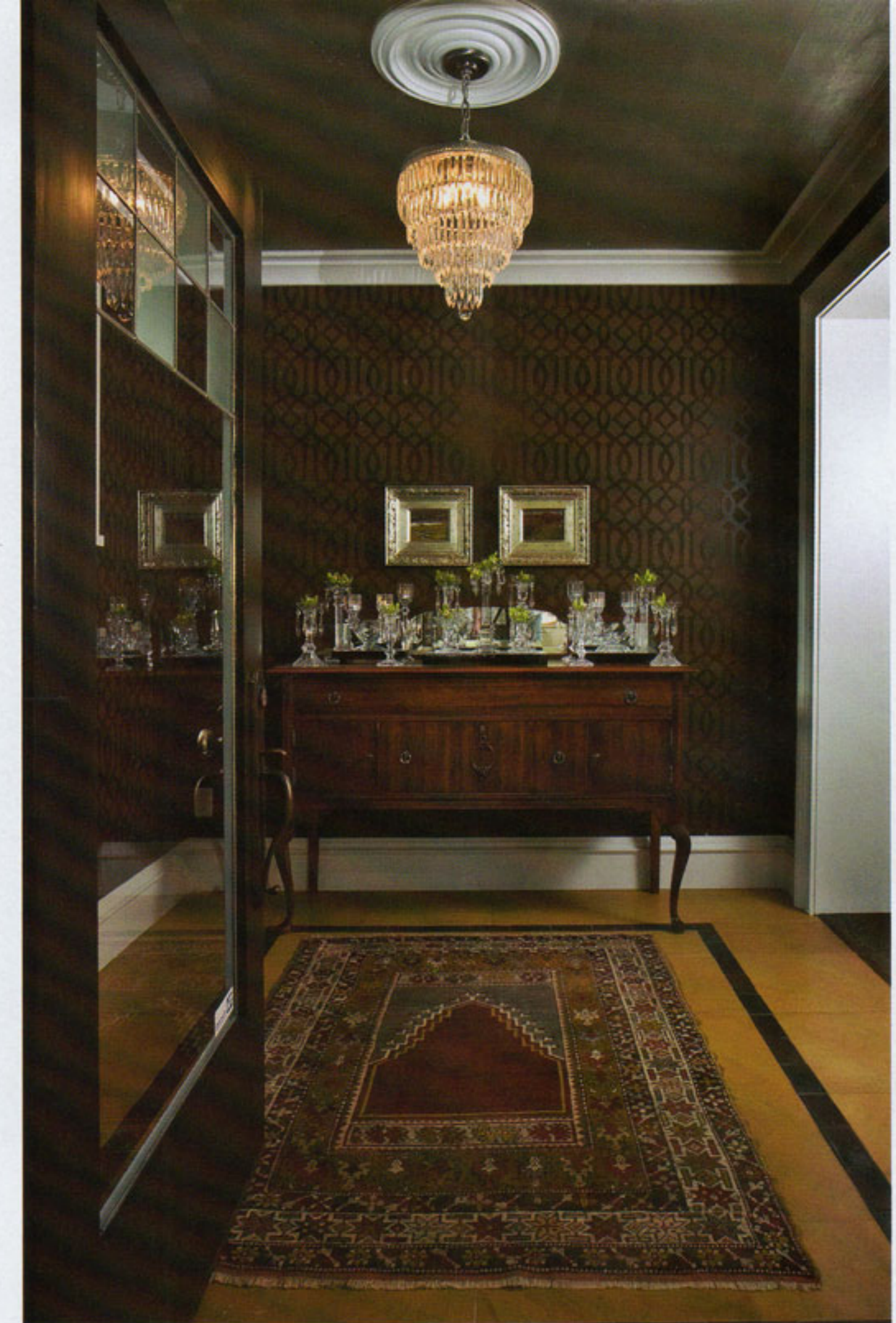
City. For proof, he offers up his recent re-do of client Susan Loveridge's 1930s home. Deeply rooted in Salt Lake's stately Federal Heights neighborhood, her abode puts a fresh face on formality and gives traditional style a spirited twist.

The corkscrew junipers dramatically framing the home's front walkway offer the first clue that the established 80-year-old house might hold some surprises. As you enter through the glass front door, your suspicions are immediately confirmed. Simply put, this is not your grandmother's formal foyer. Sure, there is patterned wallpaper, stately moldings and a crystal chandelier, but that is where the similarity stops. Each of these updated elements effuses high-style sophistication and presents a prelude to the hip vibe that flows throughout the home.

Walking from room to room, one doesn't readily peg the interior as either traditional or modern, even though there are elements of both shaping its character. "I immediately recognized the home's formality, but I knew, given Susan's taste level, it couldn't be stuffy, old or staid," says Hodson. He describes his high-energy client as stylishly chic and says she likes a little "daring" in everything from her wardrobe to her wallpaper. So when the designer went to work, he knew he would have to "mix it up," balancing timeless treatments with fashion-forward flair.

ABOVE RIGHT: Hodson dressed Loveridge's entry walls with Schumacher's Imperial Trellis paper. The silver-leafed ceiling, crystal chandelier and bright white molding help shape the foyer's fashion-forward design.

RIGHT: Walls punctuated with spacious openings enclose the dining area while separating it from the main hallway and living room. Hodson added classic moldings and panels to the walls to accentuate their architectural significance.





To give Loveridge's old home new attitude, Hodson began by transforming the existing architectural details. Characterized as "forgettable" by Hodson, the ivory colored, undersized millwork needed overhauling. In the living room, for example, the designer added molding to enlarge and enhance the existing fireplace surround, making it substantial and stylish enough to serve as the space's main focal point. In the adjoining dining room—originally framed by plain-Jane walls and ho-hum openings—Hodson added large crown molding, stately trimmed wall panels and a stunning coffered ceiling. "By going the extra mile in smaller contained spaces like this dining room, the entire home feels that much more special," he says. Elsewhere, Hodson

ABOVE LEFT: More subtly detailed than the adjoining dining room, the living room features new oak flooring and a fireplace that Hodson enhanced with beefy molding. The white ceiling and trim offset the visual weight of the dark brown walls.

LEFT: To complement the kitchen's pre-existing red and black cabinetry, Hodson chose greenish brown paint for the walls. The large island performs as a food-prep station as well as a casual dining and serving area.

Hodson reintroduced the entry's wallcovering in the dining area. This type of repetition helps create visual harmony and continuity throughout the home. Bold millwork including crown molding, a coffered ceiling and handsome wainscoting decks out this dressy space.



Hodson transformed the master bathtub's once-simple drywall enclosure into a pair of paneled columns supporting a stylized pediment. Framed mirrors and a silver-leafed ceiling add glitz and reflected light to the raised bathing area.



replaced tepid trim with eye-catching wainscoting, ceiling medallions and paneled posts. He painted all of the millwork with Benjamin Moore's semi-gloss "super white," a shade that contrasts dramatically with the home's dramatic color palette dominated by delicious browns. "Susan and I both love strong contrast, and pairing brown with white creates a really fresh yet timeless look," says Hodson.

Throughout the home, the designer selected rich espresso-toned materials including carpeting, paint, fabric and, undoubtedly the most memorable, wallcovering. "I'm a huge fan of wallpaper," says Hodson. "It's one of the easiest ways to make a big impact in a décor." But Loveridge needed a little convincing. "When Gregg showed me these wallpapers with traditional designs, I got a little nervous," says Loveridge. "I didn't want my home to look like an old lady's

ABOVE: Loveridge and Hodson agreed to notch-up the "glam factor" in the master suite. Edged in fringed and knotted trim, Bergamo sateen wool draperies hang from brushed nickel rods. Plush brown carpeting flows seamlessly to the similarly toned wallcovering, and crystal lamps and luxurious bedding pair perfectly with a stunning Lucite bed designed in the 80's.

Putting the Fun in Formal

Gregg Hodson's tips for giving tired traditional décors a wake-up call

Clean House Give fussy collections and decorative treatments the boot. With superfluous elements removed, the edited décor becomes lighter, brighter and immediately updated.

Pass on the Pastels Choose one or two rich colors and repeat them throughout the interior using a variety of materials and finishes. Create refreshing contrast with white trim and moldings.

Hit the Walls Use wallpaper to introduce updated traditional motifs and tones. Be especially daring in rooms and areas used for short intervals, including powder



Gregg Hodson

rooms, dining rooms and hallways. **Mix It Up** Juxtapose traditional patterns of different sizes. Monster-scale patterns may be too much for a sofa but are perfect for draperies, wallcoverings and pillows.

Step On It Use fine quality rugs as the foundation of your rooms. "I love the look of traditional rugs paired with modern furnishings," says Hodson.



house.” Hodson knew, however, that the papers’ oversized patterns, updated colors and chic finishes—from dull to high sheen and flat to handburnt metallic—made these renewed versions of yesterday’s wallcoverings very hip and happening. “With their pumped-up scale and fresh finishes, they offer a touch of tradition without taking themselves too seriously,” says Hodson. Once the papers hit the walls, Loveridge was sold. Not only did these wallpapers contribute to the interior’s eased-up elegance, they also gave Hodson a tool for doing what he does best—creating a feeling of continuity that flows seamlessly throughout the interior.

“There are a number of ways visually to connect the interior areas of a home, and one of the most effective is using repetition,” says Hodson. For Loveridge’s abode, he chose a narrow selection of updated materials, colors and finishes ideally suited for her fun-meets-formal décor. Then he repeated them from room to room in a variety of applications. For example, the entry’s silver-leafed ceiling mimics the finish of the interior’s satin nickel hardware and the upper hallway’s hand-burnt foil wallpaper. Crystal chandeliers sparkle in the entry and dining areas while the hallway’s sconces duplicate the same shimmer; ditto with the master suite’s ultra-chic Lucite bed. White accents and brown tones flow throughout the home—inside and out—in assorted furnishings, wall treatments and trims. “Changing the way you feature an element or effect from space to space keeps the design looking fresh throughout,” says Hodson.

If there is any style that can benefit from a shot of freshness, Hodson proves it’s buttoned-down traditional. “There is no reason formal can’t be fun,” he says. One visit to Loveridge’s revamped home proves his point perfectly. ■



ABOVE LEFT: The once-plain powder room now boasts Hodson’s stunning treatments of mosaic tile wainscoting, heavy crown molding, a silver-leafed ceiling and walls covered in a paper by Brunschwig & Fils. “Small, contained spaces are perfect for over-the-top details,” Hodson says.

LEFT: A silver-leafed, hand-burnt wallcovering by David Goldberg brightens the wide upper hallway with a glamorous sheen. Hodson grounded the space with dark brown carpeting and created a focal point with a collection of photographs grouped over a long, narrow console.